



698 Longquan Road, Panlong District, Kunming City, Yunnan Province



TEL : +86 871 65150398
FAX: +86 871 65217071



E-mail: caibao@yncb.cn
<http://www.yncb.cn>



CRUSHER



探宝

Founded in 1977

KUNMING CIBA DIGGINGS MACHINERY CO.,LTD

厂区效果图
Effect drawing of plant area



Kunming Ciba Diggings Machinery Co., Ltd., founded in 1977, is attached to Yunnan Noah's Ark Group. It is a high-tech company with business covering industrial process design, product research and development (R&D) and manufacturing. Over the past 40 years, the company has been investing in product innovation and R&D, and obtained more than 40 patents on technologies. Furthermore, it has brought in and learned internationally advanced technologies in screening and conveying to keep relevant to the time.

Since the company registered its trademark named "Caibao" 40 years ago, it has gotten considerable experience during serving its customers, including a good knowledge of ore dressing, aggregate crushing and conveying of food and beverage. Based on the experience, the investment in R&D and the professional technical group, Ciba machinery is competent to offer comprehensive services such as industrial process design, complete equipment supply and trainings for installation, adjustment and maintenance.

The company has more than 200 employees, including over 30 researchers and designers, 6 senior engineers, 10 professional engineers, 15 assistant engineers and 2 talents leading regional-level high-tech enterprises. In addition, Ciba Machinery enjoys a provincial-level technological center in Yunnan province, which consists of divisions of industrial process design, product R&D and technology development; the 3 divisions form a vital technological innovation system. Meanwhile, we have carried

out in-depth cooperation and technical exchanges with reputable companies from United States and Italy to bring in advanced technologies and ideas.

With constant technological R&D and international communications, our company's technologies reached international level, and our products are widely recognized and complimented in international market. Today, our products are exported to more than 20 countries and regions such as South America, North America, Australia, Indonesia, Malaysia, Thailand, Myanmar, Vietnam, Laos, India, and Africa.

In the year 2003, our company took the lead in passing the ISO9001 quality management system certification among other domestic counterparts. In addition, it was honored with "a high-tech company", "certificate of company-level technological center in Yunnan Province", "a growing small and medium-sized company in Yunnan" and "a pilot company for S&T innovation in Kunming". The GK screener developed and produced by our company was honored with one of the industrialized demonstration programmes. The "Caibao" branded vibrating screen and ball mill are honored with well-known trademark in Yunnan, and its flotation machines and crushers with Famous Trademark in Kunming.

Over the past 40 years, in the spirit of "fraternity and gratitude", our company, based on technological research, scientific and standardized production, operation and management, and superior after-sales service, has been working jointly with domestic and overseas customers to seek common growth and brilliant future.



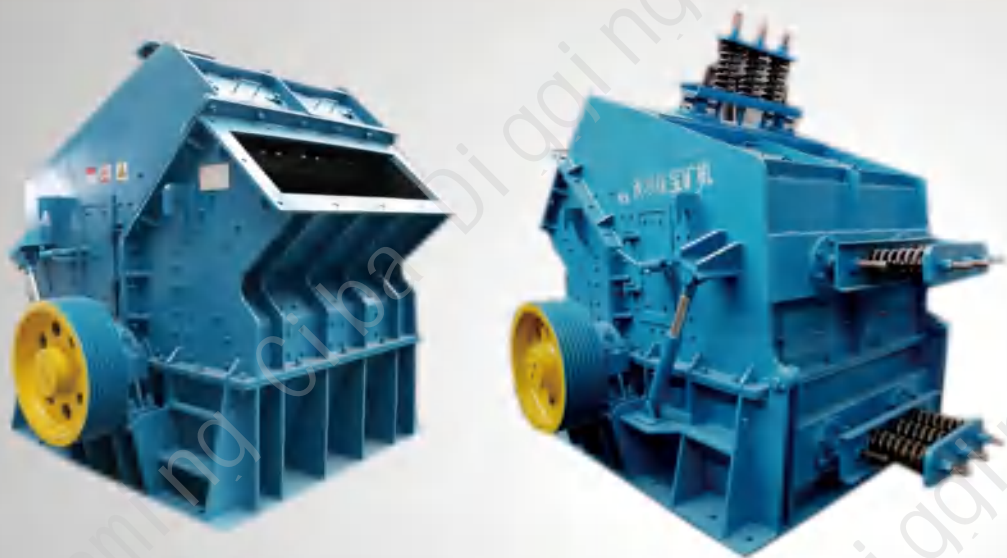
云南省认定
企业技术中心

云南省工业和信息化委员会 云南省发展和改革委员会 云南省科学技术厅
云南省财政厅 云南省国家税务局 云南省地方税务局 昆明海关



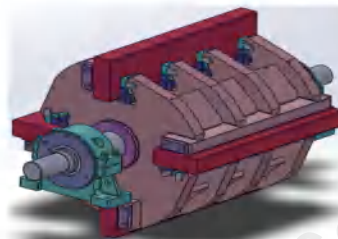
PF Series Counter Impact Crusher

The PF series impact crusher is a new generation product developed by Ciba Mining Machinery Company. Based on more than 40 years of experience in crusher manufacturing and application, as well as up-to-date technologies and design ideas at home and abroad, the impact crusher was created with outstanding performance and excellent quality.


A
B

PF series impact crusher is widely used in crushing hard rock and brittle non-metallic materials with compressive strength below 300Mpa. Its advantages are high size reduction ratio, good product shape and selective crushing. It offers perfect crushing operations in primary crushing, secondary crushing, ultra-fine crushing and waste recycling.

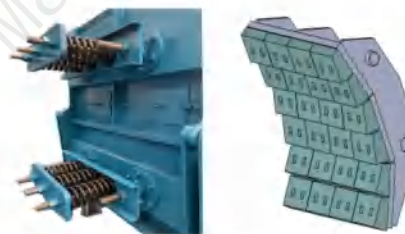
PF series impact crusher is designed creatively with a heavy rotor, a great-volume crushing chamber, reinforced impact liners, a high-strength wear-resistant flat hammer, anti-wear plates for frame protection, and hydraulic start device. It features high crushing capacity, stable performance, low cost in crushing and convenient operation and maintenance. With its size reduction ratio able to reach as high as 40, the crusher can simplify crushing circuit, e.g. shorten three-stage crushing to two- or even one-stage, as a result, the spending on crushers is reduced.



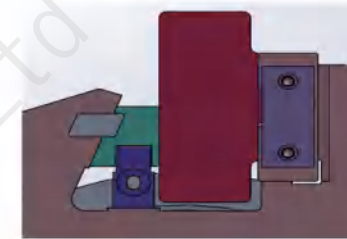
The heavy duty rotor, heavy and hardened flat hammer hammer seat and square rotor plate contribute huge rotational inertia and impact force to get fine particle shape.

High quality welding and annealing treatment ensure the rotor withstand greater impact imparted on it to achieve better crushing.

The rotor is subjected to a static balance test to ensure it a gentle oscillation during rotation.



Heavy duty counter impact frame is designed to ensure the crusher more stable and resistant to greater impact for crushing. Mechanical overload protection device effectively protects the equipment from damage caused by unbreakable materials.



With symmetrical shape, the flat hammer can use its both sides to ensure it a longer service life. The contact surface between the flat hammer and its base is machined surface to ensure a closely contact, so as to prevent the hammer from breakage caused by uneven force on it. The locking mechanism of the hammer is properly designed for its safely rotation, easily and safely replacement.



Protection plate of the heavy duty frame is modularly designed and made of top-quality wear-resistant steel plates, ensuring it a longer service life and easily replacement.

Main technical parameters of PF series counter impact crusher

Model	Opening Size (mm)	Max feed size(mm)	Crushing capacity(t/h)	Motor power (kw)
PF-1007	Φ1000 x 700	200	25-60	55-90
PF-1010	Φ1000 x 1050	250	30-100	75-110
PF-1210	Φ1250 x 1050	300	60-140	90-185
PF-1214	Φ1250 x 1400	300	80-180	132-200
PF-1313	Φ1300 x 1270	350	90-200	200-250
PF-1315	Φ1300 x 1500	350	100-250	250-315
PF-1515	Φ1500 x 1500	350	250-400	315-400
PF-1622	Φ1600 x 2200	400	400-600	450-560



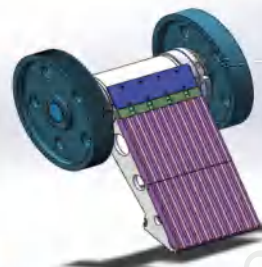
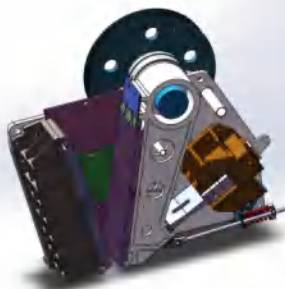
New Type Jaw Crusher

Based on in-depth research on crushing principle, and advanced foreign technologies, our company developed and designed a new type jaw crusher, which meets the needs of domestic market. Compared with its domestic counterparts, the crusher features advanced structure, lighter weight, convenient installation, reliable performance, easy operation, high throughput, high reduction ratio, high efficiency and high product rate.

The new product is the good option for hard rock crushing. The separate structure makes the crusher easily to install and hoist, especially to install underground, with the application of high-speed crushing technology, the crusher is fully empowered with impetus, leading to its high capacity and reduction ratio. Adequate damping effectively protect the foundation from vibrating damages.

1 Great feed size, high throughput, high size-reduction ratio, and low abrasion

The deep symmetrical crushing cavity design maximizes feed size, output and size-reduction ratio. The combination of properly designed swinging jaw and its speed increases crushing capacity and reduces abrasion of jaw plates. Proper jaw angle ensures fully crushing and smoothly discharge, and thus achieve a higher size-reduction ratio.

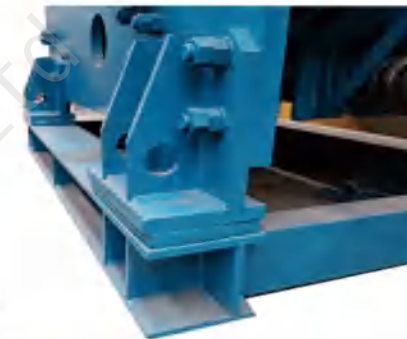


2 Superior and reliable assembly of swinging jaw

The swing jaw, made of high-quality cast steel, is driven by a large cast-iron belt wheel and a flywheel. The forged heavy eccentric shaft and high-quality spherical roller bearing ensure the crusher excellent performance and perfectly reliable. Labyrinth sealing design protects the bearing grease from contamination. The replaceable guard plate on the upper part of the swinging jaw effectively protects the moving jaw from the impact of the feed.

3 Modular and tough frame structure

The modularly designed crusher frame consists of the front frame, the rear frame and two side plates firmly assembled together with precisely-machined alignment pins and high-strength bolts. After welding, the front frame and the rear frame are subject to stress relieving to ensure the whole frame strong and durable.



4 Anchor bolt free installation

Balance of the complete machine amid operation allows the crusher be installed without an anchor bolt to achieve normal operation. The rubber at the bottom of the crusher base absorbs peak loading force amid vibrating to reduce oscillation, so as to reduce the impact the crusher imparts on the foundation.



5 Easy and safe adjustment of discharge opening

The adjustment of the opening at the discharge end of the jaws is achieved by a mechanical- or hydraulic-driven double wedges, which is simpler, safer and faster than traditional shim adjustment.

6 Integrated motor installation

The motor and its base is integrally installed, as a result, the space the crusher needs and the length of the V-shaped belt are reduced, the foundation is simplified, and the service life of the V-shaped belt becomes longer. The belt wheel and flywheel are equipped with a shield respectively to protect crusher operators from potential danger.



Main technical parameters of the new type jaw crusher

	C80	C100	C96	C106	C116	C3054	C110	C125	C140	C145	C160	C200	
Width of feeding opening (mm)	800	1000	930	1060	1150	1375	1100	1250	1400	1400	1600	2000	
Depth of feeding opening (mm)	510	760	580	700	800	760	850	950	1070	1100	1200	1500	
Motor power (kw)	75	110	90	110	132	160	160	160	200	200	250	400	
Rotational speed (rpm)	350	260	330	280	260	260	230	220	220	220	220	200	
Product size (mm)	Size of min opening of the set (mm)	t/h	t/h	t/h	t/h	t/h	t/h	t/h	t/h	t/h	t/h	t/h	
0-30	20												
0-35	25												
0-45	30												
0-60	40	65-85											
0-75	50	80-95											
0-90	60	95-125		120-155									
0-105	70	115-150	150-210	140-180	155-200	170-220	240-310	190-250					
0-120	80	130-170	170-225	160-210	175-230	190-250	270-350	210-275					
0-135	90	150-195	190-245	180-235	200-260	215-280	295-385	235-305					
0-150	100	165-215	215-280	200-260	220-290	240-310	325-425	255-330	290-380				
0-185	125	210-275	265-345	250-325	280-365	295-385	390-510	310-405	350-455	385-500	400-520		
0-225	150	250-325	315-410	300-390	335-435	350-455	460-600	370-480	410-535	455-590	470-610	520-675	
0-260	175	290-380	370-480	350-455	390-510	405-525	530-690	425-550	470-610	520-675	540-700	595-775	760-990
0-300	200		420-545		445-580	460-600	600-780	480-625	530-690	590-765	610-795	675-880	855-1110
0-340	225								590-770	655-850	680-885	750-975	945-1230
0-375	250								650-845	725-945	750-975	825-1070	1040-1350
0-410	275										820-1070	900-1170	1130-1470
0-450	300											980-1275	1225-1590

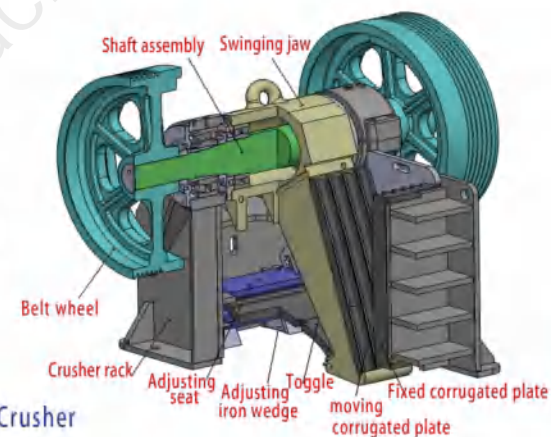
※The crushing capacity and sizes provided are only for reference, instead of for tacit promise of the equipment supplier. As rocks or ores vary widely, results in actual crushing may be different from parameters in the table. Please contact our technical center for further support.

PE & PEX Series Jaw Crushers

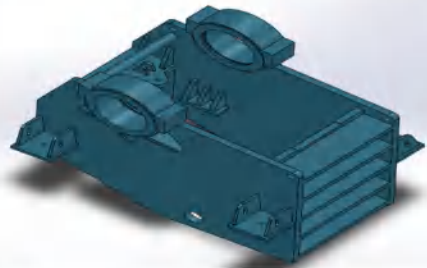


PE series (primary crushing) and PEX series (tertiary crushing) crushers are classic products developed independently by our company and best sellers for more than 30 years. They are known as simple structure, long duration and outstanding performance. They are widely used in crushing operations in such areas as metallurgy, mining, building materials, chemical industry, road construction. Generally, they are applicable to primary crushing, secondary crushing and tertiary crushing of ores or rocks with compressive strength below 250MPa. Their advantages are large size-reduction ratio, uniform product size, low power consumption, convenient maintenance, etc.

Both series crushers consist of a rack, a swinging jaw, an eccentric shaft, toggles, a pitman and springs. The rack and the swinging jaw are respectively equipped with a fixed plate and a moving plate. When the eccentric shaft rotates, the swinging jaw drives the moving plate to make periodic reciprocating movement around the pivot against the fixed plate, in this way, ores between the two plates are crushed and discharged through the set due to gravity. Adjusting the opening of the set can get required product sizes.



Jaw Crusher



After welding, the whole crusher rack is annealed to ensure the rack high strength, long duration and simple structure.

The energy-saving device developed by our company and granted with proprietary intellectual property right is used as a supporting device of the crushers. Through the device, low-power motor drives high-power equipment to save energy by 20% - 40%. It is an ideal supporting device for energy saving in crushing.

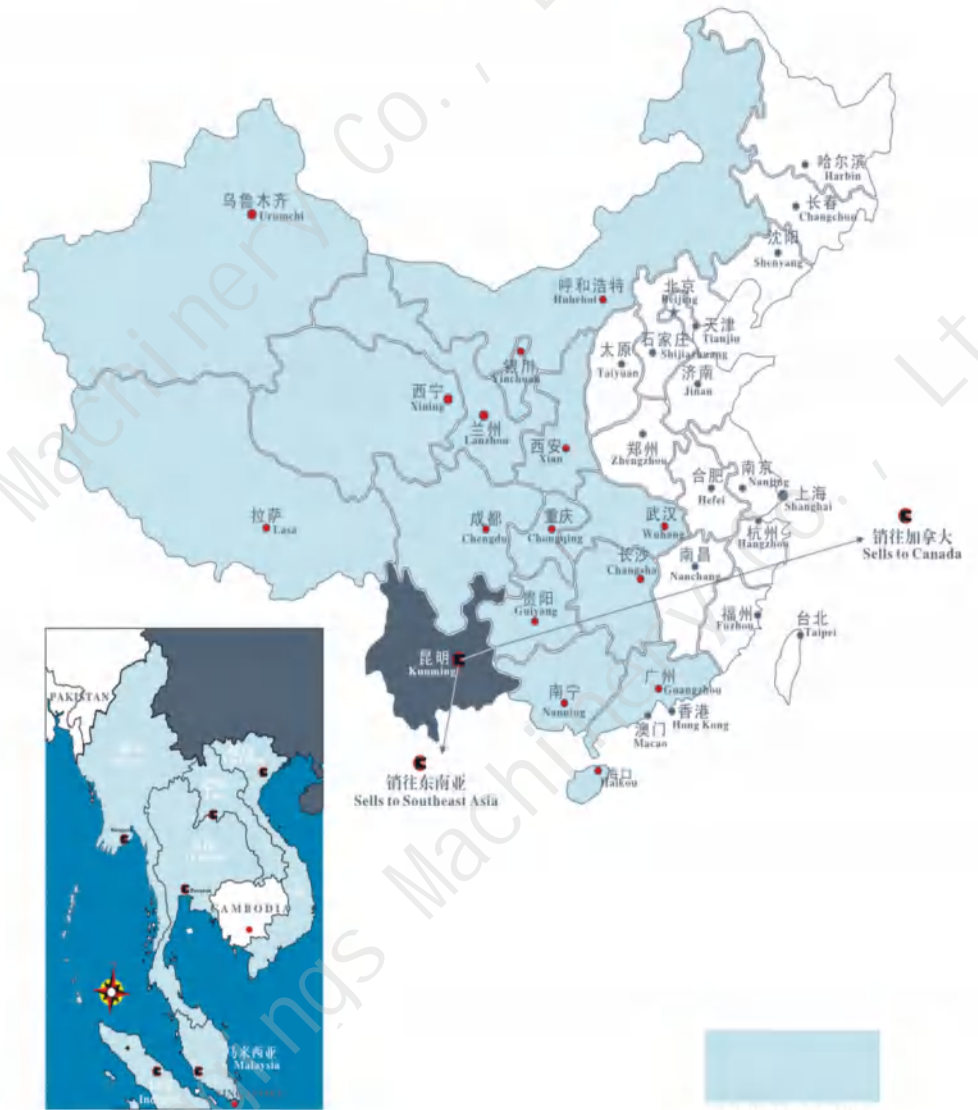


Main technical parameters of PE series (primary crushing) and PEX series (Secondary crushing) jaw crushers

Model	Gape size (mm)	Max feed size (mm)	Range of set opening (mm)	Crushing capacity (m ³ /h)	Motor power (kw)
PE-250 X 400	250 X 400	200	20-60	3-13	15
PE-400 X 600	400 X 600	340	35-85	10-40	30 (With energy saving device 18.5)
PE-500 X 750	500 X 750	425	40-100	20-52	55 (With energy saving device 45)
PE-600 X 900	600 X 900	500	60-175	30-75	75-90
PE-750 X 1060	750 X 1060	630	80-180	72-130	90-110
PE-900 X 1200	900 X 1200	750	95-165	150-230	110-132
PE-1200 X 1500	1200 X 1500	1020	150-230	200-400	160-220
PEX-100 X 750	100 X 750	80	15-40	5-11	15
PEX-150 X 750	150 X 750	120	18-48	5-15	15
PEX-250 X 750	250 X 750	210	15-50	9-22	30
PEX-200 X 1000	200 X 1000	160	20-55	7-24	30 (With energy saving device 18.5)
PEX-200 X 1200	200 X 1200	160	18-55	8-28	30 (With energy saving device 18.5)
PEX-250 X 1000	250 X 1000	200	25-60	10-40	37 (With energy saving device 18.5)
PEX-250 X 1200	250 X 1200	210	25-60	12-50	37 (With energy saving device 22)
PEX-300 X 1300	300 X 1300	250	20-90	10-65	75

※The crushing capacity and sizes provided in the table are only for reference, rather than for tacit promise of the equipment supplier. As rocks or ores vary widely, results in actual crushing may be different from parameters in the table. Please contact our technical center for further support.

Sales network in the map



东南亚市场示意
Sketch Map of Southeast Asia Market

※Our company reserves the right to change and interpret the text, pictures and data in this brochure.